

Model Number

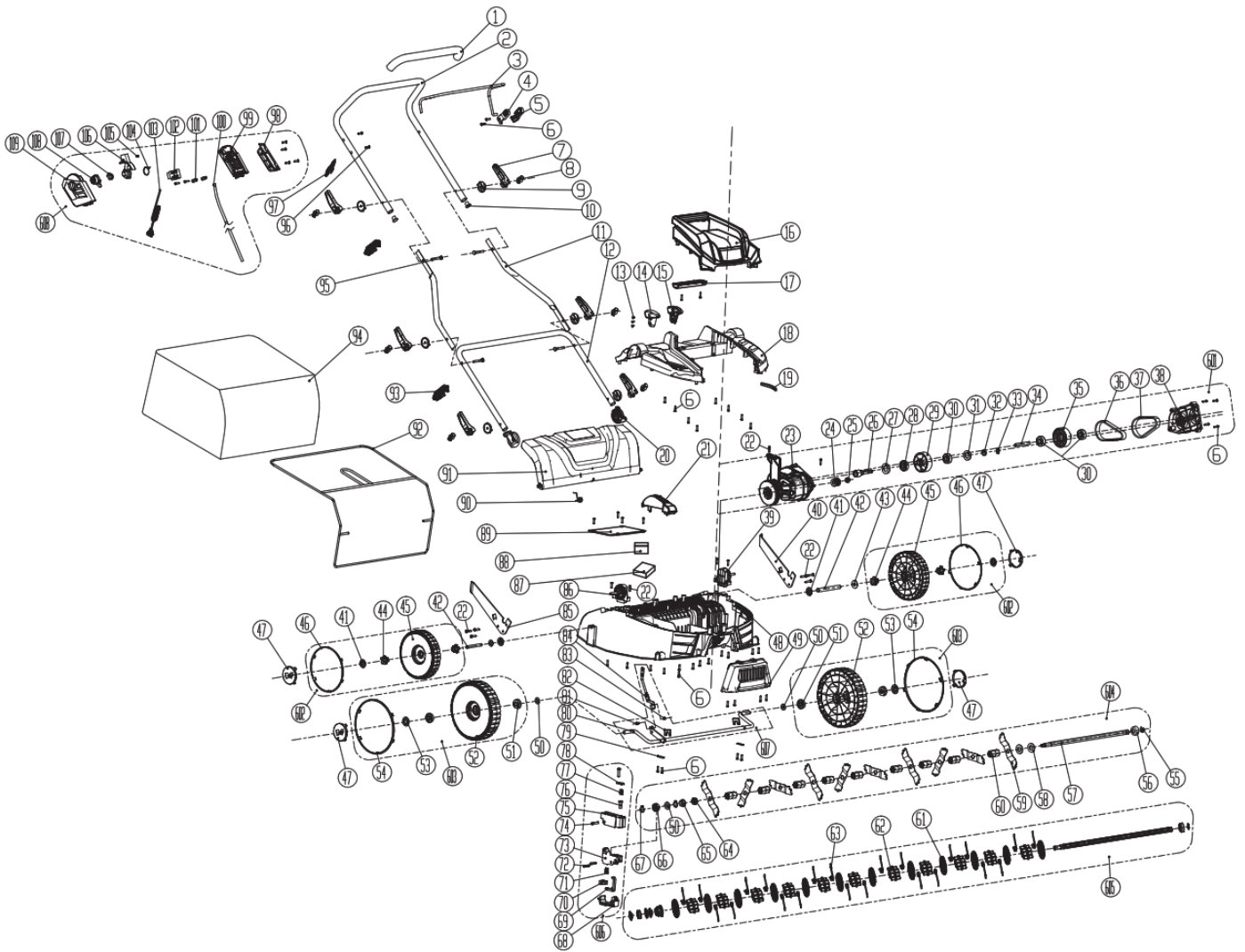
Mac Allister MSRP1800-3



1800W Raker and Scarifier

Parts Manual

Exploded Diagram



Parts List

Part ID	Apelson PN	MPN	Part Description	Qty
1	GP0000002108	8.43.0375	SOFT GRIP	1
2	GP0000004127	8.33.1375B-B	UPPER HANDLEBAR	1
3	GP0000002110	8.33.0475-Z6107	SWITCH LEVER	1
4	GP0000002112	8.41.2275-B	SWITCH LEVER LEFT SUPPORT BRACKET	1
5	GP0000002111	8.41.2175-B	SWITCH LEVER RIGHT SUPPORT BRACKET	1
6	5510101	5.51.0101	SCREW	51
7	GP0000002114	8.41.1084-Z6107	CLAMP LEVER	6
8	GP0000002115	7.41.2661-5B	CLAMP LEVER SHAFT	6
9	GP0000002116	8.41.3675-B	FLANGE	6
10	GP0000004128	8.41.3875-B	END CAP	2
11	GP0000002118	8.33.03106-B	MIDDLE HANDLEBAR	2
12	GP0000002119	8.33.1775-B	LOWER HANDLEBAR	1
13	5510601	5.51.0601	SCREW	3
14	GP0000002121	8.41.2278-Z6107	DEPTH ADJUSTMENT HANDLE COVER	1
15	GP0000002122	8.41.2378-Z6107	DEPTH ADJUSTMENT HANDLE BASE	1
16	GP0000004129	8.41.1284-B	MOTOR HOUSING	1
17	GP0000004130	8.41.1584-B	HANDLE COVER	1

18	GP0000002131	8.41.0184-B	HOUSING	1
19	GP0000002133	8.43.0275	DUSTPROOF SPONGE	1
20	GP0000002135	8.41.24106-B	ANGLE ADJUST BLOCK	2
21	GP0000004131	8.41.1184-B	AIR GUIDE HOOD	1
22	GP0000000766	5.51.0161	SCREW	17
23	GP0000004132	7.12.02106	MOTOR ASSEMBLY	1
24	GP0000002143	8.31.0275	DRIVE PULLEY	1
25	GP0000002144	5.52.0203	NUT	1
26	GP0000002145	8.32.0275	GEARBOX OUTPUT SHAFT	1
27	GP0000002146	8.44.0575	DUST GASKET 2	1
28	GP0000002147	5.54.1101	BALL BEARING	1
29	GP0000002148	7.41.13106	BELT PULLEY	1
30	GP0000002149	5.54.1201	BALL BEARING	3
31	GP0000002150	8.44.0475	DUST GASKET 1	1
32	GP0000002151	5.53.1999	WAVE GASKET	1
33	GP0000002152	5.53.0605	SHAFT CLIP	1
34	GP0000002153	8.32.0175	PULLEY SHAFT	1
35	GP0000002154	8.41.12106	DOUBLE PULLEY	1
36	GP0000002155	8.42.01106	BELT 1	1
37	GP0000002156	8.42.0375	BELT 3	1
38	GP0000004133	8.41.2475	GEARBOX COVER	1
39	GP0000002160	7.41.26106-5B	LEFT FIX BLOCK	1
40	GP0000002161	7.33.01106-3B	LEFT BRACKET	1
41	GP0000000755	5.53.1799	BEARING CLIP	4
42	GP0000002163	8.33.0875	REAR AXLE	2
43	GP0000002164	5.53.0699	FLAT WASHER	2
44	GP0000002165	8.41.1075-B	SLEEVE	4
45	GP0000002166	8.41.15106	REAR WHEEL	2
46	GP0000002167	8.41.17106-Z6108	REAR RIM	2
47	GP0000002168	8.41.18106-B	WHEEL CAP	4
48	GP0000002169	8.41.1484-B	DECK	1
49	GP0000002170	8.41.0584-B	TRIM COVER OF DECK	1
50	GP0000002171	5.53.2185	FLAT WASHER	4
51	GP0000002172	5.54.0299	BEARING	4
52	GP0000002173	8.41.14106-B	FRONT WHEEL	2
53	GP0000002174	5.53.1899-02	BEARING CLIP	2
54	GP0000002175	8.41.16106-Z6107	FRONT RIM	2
55	GP0000002176	5.53.2207	CIRCLIP	2
56	GP0000002177	8.33.0975	DUSTPROOF RING	2
57	GP0000002178	8.32.01106	HEX SHAFT	2
58	GP0000002179	5.53.2099	FLAT WASHER	2
59	GP0000002180	8.33.0279	BLADE	10
60	GP0000002181	8.41.3375-B	LONG SHAFT BUSHING	9
61	GP0000002182	8.41.2775-B	RAKER END CAP	12
62	GP0000002183	8.41.2875-B	RAKER SPRING SEAT	11
63	GP0000002184	8.34.01106	TINE	22
64	GP0000002185	8.41.3275-B	SHORT SHAFT BUSHING	1
65	GP0000002186	5.52.0604	NUT	2
66	GP0000002187	5.54.1301	BALL BEARING	2

67	GP0000002188	5.53.0705	SHAFT CLIP	4
68	GP0000002189	8.41.21106-R3020	LOCKING LEVER	1
69	GP0000002190	8.33.05106	LINK BAR	1
70	GP0000002191	8.41.22106-P123U	LOCKING BUTTON	1
71	GP0000002192	8.34.03106	SPRING	1
72	GP0000002193	5.55.0502	ELASTIC COTTER PIN 1	2
73	GP0000002194	8.41.20106	CUTTING TOOL HOLDER	1
74	GP0000002195	5.55.0202	ELASTIC COTTER PIN 2	1
75	GP0000002196	8.41.19106	CUTTING TOOL SEAT	1
76	GP0000002197	8.41.23106-P123U	BLOCK	1
77	GP0000002198	8.34.02106	SPRING	1
78	GP0000002199	8.41.04106	SPRING PRESSURE PLATE	1
79	GP0000002200	8.33.0550	AXLE PRESSURE PLATE	2
80	GP0000002201	8.33.0375	FRONT AXLE	1
81	GP0000000770	5.51.1003	SCREW	1
82	GP0000002202	8.33.1075	AXLE BAFFLE	2
83	5520103	5.52.0103	NUT	1
84	GP0000002204	8.33.0275	DEPTH ADJUSTMENT LEVER ASSEMBLY	1
85	GP0000002205	7.33.02106-3B	RIGHT BRACKET	1
86	GP0000002206	7.41.25106-5B	RIGHT FIX BLOCK	1
87	GP0000002134	8.29.0461	WEIGHT COUNTERBALANCE	2
88	GP0000002132	9.85.0321	POLY BAG	1
89	GP0000004134	8.41.0975-B	COVER	1
90	GP0000002213	8.34.0375	DEFLECTOR GUARD TORSION SPRING	1
91	GP0000002214	8.41.0384-B	DEFLECTOR GUARD	1
92	GP0000002215	7.33.08106-3B	STEEL FRAME	1
93	GP0000002216	8.41.4375-B	WIRE CLIP	2
94	GP0000002217	8.44.01106	CATCHER	1
95	GP0000002218	5.51.0609	BOLT	4
96	GP0000000734	5.51.0201	SCREW	2
97	GP0000004135	8.41.4575-B	CORD RETAINER	1
98	GP0000002220	8.41.5075-B	SWITCH BOX COVER	1
99	GP0000002221	8.41.5775-B	SWITCH BOX BASE	1
100	GP0000004136	7.64.0675-9	POWER CORD CAPACITOR ASSEMBY	1
101	GP0000000372	8.41.5375-0	CRIMPING PLATE	2
102	GP0000002224	8.83.0175	SWITCH	1
103	GP0000004137	8.64.0375-B	UK PLUG	1
104	GP0000000730	8.34.0275	SWITCH TRIGGER TORSION SPRING	1
105	GP0000002226	5.51.1001	SCREW	1
106	GP0000002227	8.41.5275-Z6107	ROCKET ARM	1
107	GP0000000727	8.34.0550	SPRING	1
108	GP0000002229	8.41.5175-Z6107	LOCK-OFF BUTTON	1
109	GP0000002230	8.41.5875-B	SWITCH BOX UPPER COVER	1